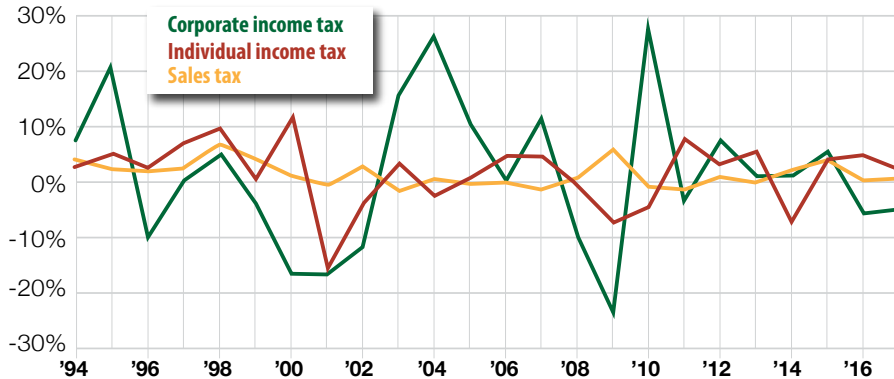


### Wisconsin tax collection volatility 1994-2017



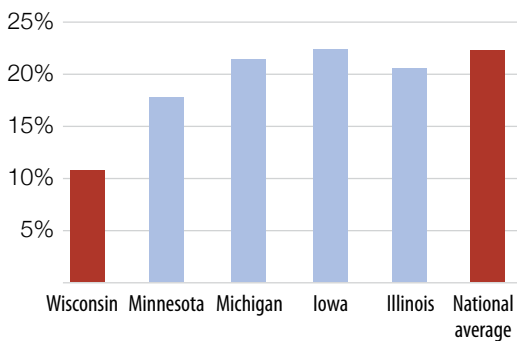
Dollar amounts were adjusted for inflation and expressed in 2017 dollars prior to calculating percentage changes using the Consumer Price Index for all urban consumers (CPI-U) from the Bureau of Labor Statistics.  
Source: U.S. Census Bureau, state and local government finance.

**350,000**

**Wisconsin workers** who would lose their jobs as a result of a \$15 minimum wage, which is nearly a third of all workers currently earning less than that

*"Minimum Wage: The High Cost of Increasing the Minimum Wage in Wisconsin to \$15"*  
by Ike Brannon and Andrew Hanson

### Share of Medicaid and CHIP eligible children receiving dental treatment in Midwestern states in 2015



Data are from the Dental and Oral Health Services in Medicaid and CHIP report by the Centers for Medicare and Medicaid Services: Medicaid/CHIP – Health Care Quality Measures. National average is the state median.

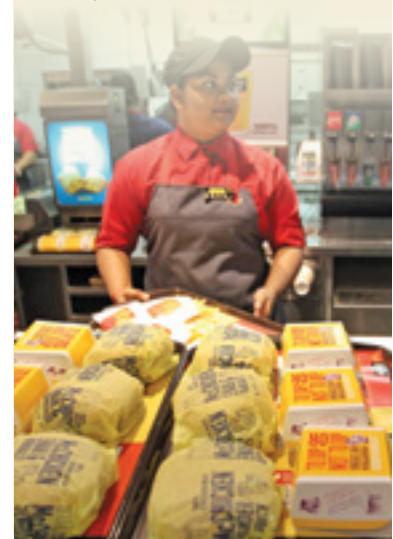
**“Creating the dental therapy profession in Wisconsin could reduce the shortage of dental care providers ... and the size of the underserved population in the state by up to 42 percent.”**

– **Jason Hicks and Morris M. Kleiner**, in their policy brief *“Dental Therapists: A Solution to Wisconsin’s Costly Dental Access Problem?”*

**\$5.29**

**The cost to taxpayers of each and every ride on The Hop for the next 30 years\***

\*Based on ridership levels on the Milwaukee streetcar for the first three months and the initial \$128 million cost, and assuming that fares and other revenues will cover the additional annual, ongoing operating costs.



### Wisconsin transportation borrowing & debt service 2000-'18

